

C  
Z  
E  
C  
H  
M  
A  
N  
U  
F  
A  
C  
T  
U  
R  
E





IDOL SPAS® company, s.r.o. was based on 13-year's experience of its owner in the sale of whirlpools world's leading brands.

Based on these years of experience, we have decided that we will produce our own whirlpools brand IDOL SPAS®.

All IDOL SPAS® are made in the Czech Republic using the highest quality materials and components, with high reliability, long life, beyond their warranties:

5

year warranty  
on metal structure

15

year warranty  
on acrylic

2

year warranty on all  
other components

Each spa meets the highest quality standards IDOL SPAS® sets itself.

All our hot tubs are suitable for both:  
the exterior and the interior.

- We use the highest possible quality of the components and we think of the convenience and easeuse.
- When designing new models of our spas we collaborate with professional therapists and specialists.
- We design our spas for great comfort with an emphasis on ergonomics.
- CG Air® technology, LUCITE acrylic, Waterway® pumps, Gecko® technology and Balboa® technology guarantee longevity, simple service and most importantly great performance and ease of operation and worldwide.
- Perfect jet massage provides the the American company CMP®
- If you have trouble with space to move in, we will be more then happy to offer you spa which fits 80 cm doors.



#### **GECKO®**

25 years of experience in the design and manufacturing of interfaces and controls of all types have made GECKO® experts in product interaction and user behavior. Simplicity, intuitivity, elegance and performance are not only starting points of design projects but driving forces of their creativity.

#### **WATERWAY®**

Pumps are one of the most important components. Therefore, we use only those that are durable, economical, quiet and powerful. Circulation pumps Waterway® have maximum consumption of 0.3 kilowatts per hour. Massage pumps Waterway® have power to 5 HPS.

#### **LUCITE®**

Lucite International is the global leader in the design, development and manufacture of acrylic-based products.

#### **CG AIR®**

CG Air Systems are major manufacturers of air systems in the world market. IDOL SPAS® uses air system with preheating air.

#### **BALBOA®**

Balboa Water Group is a global supplier of control systems and equipment for the leisure water industry. With over two decades of dedication to innovative design and development, Balboa has a complete line of spa products from which to choose.

#### **CMP®**

CMP® jets offers a complete solution for your the quality massage. They offer exceptional and time-less design. We use them in standard equipment with adjustable nozzles for each direct or rotation.



# Sofi – spa you can fit into your bathroom

The smallest spa for 2 people. You can fit the spa to your bathroom easily. The best adjustable jets will take care about the great hydromassage and relax.

|                   |                        |
|-------------------|------------------------|
| Size:             | 2000 × 1350 × 780 mm   |
| Number of places: | 2                      |
| Pumps:            | 1 × 5 HPS              |
| Power supply:     | 400 V/ 230 V, 50–60 Hz |
| Number of jets:   | 36                     |
| Heating:          | 3 kW                   |
| Filtration:       | cartridge              |

## PARAMETERS

## STANDARD EQUIPMENT

- All pumps Waterway 5HPS
- Gecko control unit (Balboa) + in.k500 panel – color display
- Standard acrylic isolation + base foil isolation of sheathing
- Shell: Lucite acrylic USA – Microbian Technology
- Hardened plastic base
- Skirt
- Ozonator Balboa
- The main LED light
- Galvanized steel frame
- Drain valve



# SOFI

CZECH MANUFACTURE



# Nela has the latest design and beautiful lines

Thanks to its compact size fits in to smaller interiors. Modern Gecko control panel and rotary jets for perfect hydrotherapy are included the basic price.

|                   |                      |
|-------------------|----------------------|
| Size:             | 2000 × 1600 × 780 mm |
| Number of places: | 3                    |
| Pumps:            | 2 × 3 HPS            |
| Power supply:     | 400 V, 50–60 Hz      |
| Number of jets:   | 50                   |
| Heating:          | 3 kW                 |
| Filtration:       | cartridge            |

## PARAMETERS

## STANDARD EQUIPMENT

- All pumps Balboa 3HPS
- Gecko control unit (Balboa) + in.k500 panel – color display
- Standard acrylic isolation + base foil isolation of sheathing
- Shell: Lucite acrylic USA – Microbian Technology
- Hardened plastic base
- Skirt
- Ozonator Balboa
- The main LED light
- Galvanized steel frame
- Drain valve



# NELA

CZECH MANUFACTURE



# Spa with ideal dimensions

It offers comfort for 3 people, the best equipment comfort and elegance beautiful ornamental elements!

# LILY

CZECH MANUFACTURE

|                   |                      |
|-------------------|----------------------|
| Size:             | 2100 × 1600 × 890 mm |
| Number of places: | 3                    |
| Pumps:            | 2 × 3 HPS            |
| Power supply:     | 400 V, 50–60 Hz      |
| Number of jets:   | 46                   |
| Heating:          | 3 kW                 |
| Filtration:       | cartridge            |

## PARAMETERS

## STANDARD EQUIPMENT

- All pumps Balboa 3HPS
- Gecko control unit (Balboa) + in.k500 panel – color display
- Standard acrylic isolation + base foil isolation of sheathing
- Shell: Lucite acrylic USA – Microbian Technology
- Hardened plastic base
- Skirt
- Ozonator Balboa
- The main LED light
- Galvanized steel frame
- Drain valve





# Enjoy moments of relaxation together

Czech whirlpool with the highest quality equipment from leading manufacturers Waterway and Gecko!

# GIZELA

CZECH MANUFACTURE

|                   |                      |
|-------------------|----------------------|
| Size:             | 2000 × 2000 × 850 mm |
| Number of places: | 4                    |
| Pumps:            | 2 × 5 HPS            |
| Power supply:     | 400 V, 50–60 Hz      |
| Number of jets:   | 77                   |
| Heating:          | 3 kW                 |
| Filtration:       | cartridge            |

## PARAMETERS

## STANDARD EQUIPMENT

- All pumps Waterway 5HPS
- Gecko control unit (Balboa) + in.k500 panel – color display
- Standard acrylic isolation + base foil isolation of sheathing
- Shell: Lucite acrylic USA – Microbian Technology
- Hardened plastic base
- Skirt
- Ozonator Balboa
- The main LED light
- Galvanized steel frame
- Drain valve





# The largest spa that fits in the door



Spa can be equipped with a fountain, waterfall, LED flashing lights around the perimeter, the speakers and the most advanced equipment such as Gecko in Touch, UV lamp, Microsilks etc.

|                   |                      |
|-------------------|----------------------|
| Size:             | 2100 × 1900 × 780 mm |
| Number of places: | 5                    |
| Pumps:            | 2 × 5 HPS            |
| Power supply:     | 400 V, 50–60 Hz      |
| Number of jets:   | 63                   |
| Heating:          | 3 kW                 |
| Filtration:       | cartridge            |

## STANDARD EQUIPMENT

- All pumps Waterway 5HPS
- Gecko control unit (Balboa) + in.k500 panel – color display
- Standard acrylic isolation + base foil isolation of sheathing
- Shell: Lucite acrylic USA – Microbian Technology
- Hardened plastic base
- Skirt
- Ozonator Balboa
- The main LED light
- Galvanized steel frame
- Drain valve



# ANNA

CZECH MANUFACTURE





# New model 2018

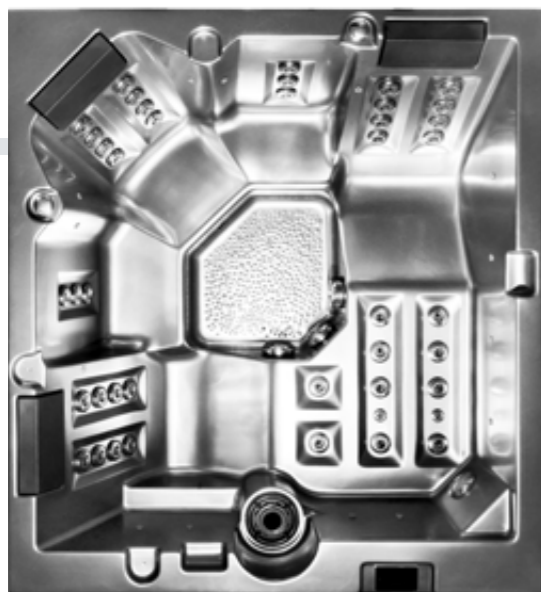
This great spa has 2 lying places and 3 sitting places. You can enjoy a great communication inside the spa because of layout places.

|                   |                      |
|-------------------|----------------------|
| Size:             | 2100 × 1900 × 840 mm |
| Number of places: | 5                    |
| Pumps:            | 2 × 3 HPS            |
| Power supply:     | 400 V, 50–60 Hz      |
| Number of jets:   | 42                   |
| Heating:          | 3 kW                 |
| Filtration:       | cartridge            |

## PARAMETERS

## STANDARD EQUIPMENT

- All pumps Waterway 3HPS
- Gecko control unit (Balboa) + in.k500 panel – color display
- Standard acrylic isolation + base foil isolation of sheathing
- Shell: Lucite acrylic USA – Microbian Technology
- Hardened plastic base
  - The main LED light
- Skirt
  - Galvanized steel frame
- Ozonator Balboa
  - Drain valve



# NICOL

CZECH MANUFACTURE



# New model 2018

This great spa has 2 lying places and 2 sitting places. You can enjoy a great communication inside the spa because of layout places.

|                   |                      |
|-------------------|----------------------|
| Size:             | 2100 × 1900 × 840 mm |
| Number of places: | 4                    |
| Pumps:            | 2 × 5 HPS            |
| Power supply:     | 400 V, 50–60 Hz      |
| Number of jets:   | 44                   |
| Heating:          | 3 kW                 |
| Filtration:       | cartridge            |

## STANDARD EQUIPMENT

- All pumps Waterway 5HPS
- Gecko control unit (Balboa) + in.k500 panel – color display
- Standard acrylic isolation + base foil isolation of sheathing
- Shell: Lucite acrylic USA – Microbian Technology
- Hardened plastic base
- Skirt
- Ozonator Balboa
- The main LED light
- Galvanized steel frame
- Drain valve



## PARAMETERS

# CHRISTI

CZECH MANUFACTURE





# Great spa for a big family

The spa EMA is the best option. Relaxation and therapy in this hot tub is for 5 people. Dimension of this hot tub allows installation almost anywhere. Installation almost anywhere.

|                   |                      |
|-------------------|----------------------|
| Size:             | 2200 × 2200 × 920 mm |
| Number of places: | 5                    |
| Pumps:            | 2 × 5 HPS            |
| Power supply:     | 400 V, 50–60 Hz      |
| Number of jets:   | 58                   |
| Heating:          | 3 kW                 |
| Filtration:       | cartridge            |

## STANDARD EQUIPMENT

- All pumps Waterway 5HPS
- Gecko control unit (Balboa) + in.k500 panel – color display
- Standard acrylic isolation + base foil isolation of sheathing
- Shell: Lucite acrylic USA – Microbian Technology
- Hardened plastic base
- Skirt
- Ozonator Balboa
- The main LED light
- Galvanized steel frame
- Drain valve



PARAMETERS

# EMA

CZECH MANUFACTURE





# Do you need extra massage for your legs?

Design, performance and premeditation will amaze you as much as you would have a desire to have this hot tub at home right now. Stainless steel jets improve the design of this spa and help LED lighting to excel.

|                   |                      |
|-------------------|----------------------|
| Size:             | 2200 × 2200 × 920 mm |
| Number of places: | 5                    |
| Pumps:            | 2 × 5 HPS            |
| Power supply:     | 400 V, 50–60 Hz      |
| Number of jets:   | 72                   |
| Heating:          | 3 kW                 |
| Filtration:       | cartridge            |

## PARAMETERS

## STANDARD EQUIPMENT

- All pumps Waterway 5HPS
- Gecko control unit (Balboa) + in.k500 panel – color display
- Standard acrylic isolation + base foil isolation of sheathing
- Shell: Lucite acrylic USA – Microbian Technology
- Hardened plastic base
  - The main LED light
- Skirt
  - Galvanized steel frame
- Ozonator Balboa
  - Drain valve



# ELIS

CZECH MANUFACTURE





# Ergonomically designed in every detail

Beautiful ergonomic whirlpool that exceeds your imagination. Thanks to the production in the Czech Republic it can be completely customized to your needs. Best components of whirlpool.

|                   |                      |
|-------------------|----------------------|
| Size:             | 2300 × 2300 × 950 mm |
| Number of places: | 6                    |
| Pumps:            | 2 × 5 HPS            |
| Power supply:     | 400 V, 50–60 Hz      |
| Number of jets:   | 71                   |
| Heating:          | 3 kW                 |
| Filtration:       | cartridge            |

## PARAMETERS

## STANDARD EQUIPMENT

- All pumps Waterway 5HPS
- Gecko control unit (Balboa) + in.k500 panel – color display
- Standard acrylic isolation + base foil isolation of sheathing
- Shell: Lucite acrylic USA – Microbian Technology
- Hardened plastic base
- Skirt
- Ozonator Balboa
- The main LED light
- Galvanized steel frame
- Drain valve



# ZORA

CZECH MANUFACTURE



**SOFI**



2000 × 1350 × 780 mm



**NELA**



2000 × 1600 × 780 mm



**NICOL**



2100 × 1900 × 840 mm



**CHRISTI**



2100 × 1900 × 840 mm



**LILY**



2100 × 1600 × 890 mm



**GIZELA**



2000 × 2000 × 850 mm



**EMA**



2200 × 2200 × 920 mm



**ELIS**



2200 × 2200 × 920 mm



**ANNA**



2100 × 1900 × 780 mm



**ZORA**



2300 × 2300 × 950 mm





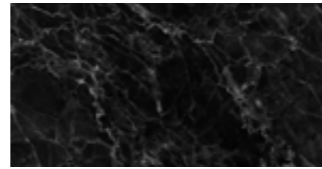
SHELL



White pearl



White marble



Black marble



Brown marble



Blue marble



Silver

SKIRT



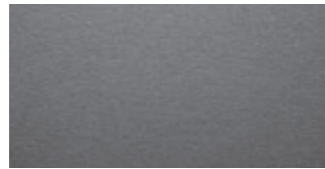
Gold Oak



Dark Oak



Black



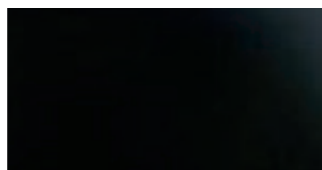
Grey

WE CAN APPLY YOUR OWN SKIRT, OR ANY OTHER SKIRT ON REQUEST

COVER



Light brown



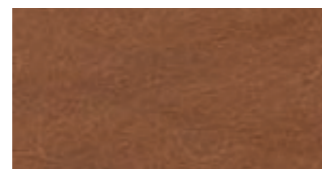
Black



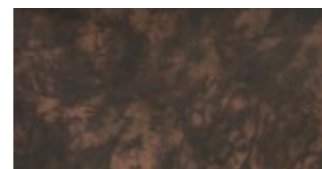
Light grey



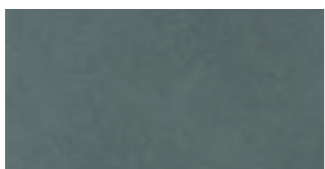
Cherry



Sand



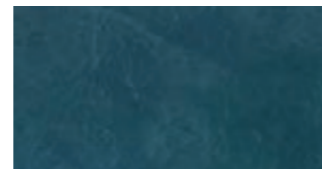
Dark brown



Dark grey



Beige



Blue

# Health Benefits of Hot Tub

- Improves circulation strain on the heart by opening the blood vessels
- Increases metabolism through heat, which helps to burn body fat faster
- Provides health benefits of exercise with less strain on the heart
- Improves mental state through relaxation and a clearer, refreshed mind.
- Improves your ability to fall asleep faster.
- Promotes the flow of endorphins.
- Accelerates the body's natural healing processes
- Decreases joint pain and stress put on the body



IDOL SPAS®

International wifi 📶  
control of your spa.

Best adjustable  
jets CMP®

CMP® jets has double function and replace all other common jets.  
You can set them up as rotating as well as direct easily.





**TOP PANEL GECKO® K.800**

This control panel is larger than standard K500, has a larger color display, more buttons – to operate the pumps (up to 5). Compared to K500 it remembers time when power outage. Furthermore it gives very good control of any other equipment.

**TOP PANEL GECKO® K.1000**

This is a Gecko novelty of 2016. Full touch capacitive display with beautiful icons and comfort control of spa.

**GECKO® IN.TOUCH**

Wifi connection and spa control over the internet. Thanks to this technology you can control the spa wherever you are over the phone. Apps for Android and Iphone will also monitor when to clean the filter and more maintenance. It also allows the installation of separate buttons for running pumps whirlpool which is used mainly for commercial whirlpools. The mobile application is free.

**GECKO® IN.STREAM**

Gecko In stream is an advanced control system of music. Via Bluetooth you can connect your phone with a spa. The mobile application is free.

**BLOWER BALBOA®**

With air jets. The amount of air jets can be different. Depends on the exact model. Mostly from 8 up to 12 jets. Placement on request.

**TOP PANEL BALBOA® BP2100**

Control Balboa BP2100 plus touch panel. It is last model of Balboa company. Full touch display with icons. Possible to buy wifi control to control the spa from everywhere in the world.

**BALBOA MICROSILK®**

Water is a fundamental force of the universe. As humans we are mostly made up of water. Our planet is mostly water. Water is power. Water is beauty. Water is life. At least, that's what they believe at Balboa. As a result they are dedicated to innovation and changing the ways you interact with water while at the same time bringing exciting new technological innovations and approaches to hydrotherapy. Look younger. Feel better. Increase your happiness, all with MicroSilk® Hydrotherapy for spas by Balboa Water Group.

**STAIRS**

We manufacture the stairs in the same color as your PVC sheathing so it will complement the design of your spa beautifully. Measurements: 70 cm width, 60 cm deep, 40 cm height.

**CG – AIR® BLOWER WITH AIR PREHEATING**

Canadian blower CG-Air is the specialist in blower systems. Some clients do not like the cold air coming from air blower, so we offer possibility of choice with blower 400W air pre-heating. Placement on the request.

**UV LAMP**

Save costs on maintenance spa water. Each spa which is equipped with cartridge filtration or the sand can not be treated without chemicals. If you want to save on chemistry, get helper for your filtration – UV lamp. UV lamp affects the water directly, which disinfects by UV radiation successively.

**AROMATHERAPY**

You can scent your spa via dispenser. We do not use dosage fragrance through the water, because it affects the quality of water.

**FOUNTAIN**

Fountain gives a pleasant atmosphere not only when you're in the SPA, but even if you are grilling near by.

**THERMO COVER**

The cover is almost an integral part of the spa. We produce quality thermo covers of great quality leather for long-term use. We manufacture the cover in various designs, colors and thicknesses, according to your wishes.

**ISOLATION**

Our whirlpools both indoors and outdoors in the garden can be insulated with PUR foam and modern Al-PUR films, always in the thickness sufficient to prevent heat loss and thus the finance needed to heat water in your spa. Not only used isolating material, but also places that insulates are important.

**ARTIFICIAL STONE SKIRT**

Imitation of stone for the spa is a beautiful choice. Especially if you fit into the exterior which has stones around. Changing of colors is possible by arrangement. We can offer sand color and gray color.

**PVC LUXURY SKIRT**

Exclusive skirt is manufactured only from Czech materials. Quality PVC is decking by best company – RENOL. These foils are used throughout Europe for windows, doors, facades etc. 80% of the windows in the Czech Republic are designed of golden oak. The design can be used on the cover of your spa too. Alternatively, you can choose from different colors which are sold by the RENOL company.

**LED CUPHOLDER**

Choose from a wide variety of spa lighting solutions designed to fit your specific needs. Options range from simple traditional spa lights to sophisticated, co-molded hooded fixtures. CMP Optix will enhance your hot tub compositions or designs with elegant lighting solutions.

**UNDERWATER LED LIGHTS**

CMP® Optix provides complete lighting solutions for vivid enhancement of any hot tub exterior or interior. A complete, cohesive LED program that is compatible with LED systems from every major LED supplier.





Československé Armády 659,  
Jílové u Prahy, 254 01  
Czech Republic

#### **SHOWROOM**

Zděbradská 56,  
Jažlovice 251 01  
Obchodní zóna Praha-Modletice.  
(D1, EXIT 10, Říčany)  
Czech Republic

#### **WWW.IDOL.CZ**

M: +420 720 171 000  
E: sales@idol.cz

M: +420 604 844 444  
E: info@idol.cz